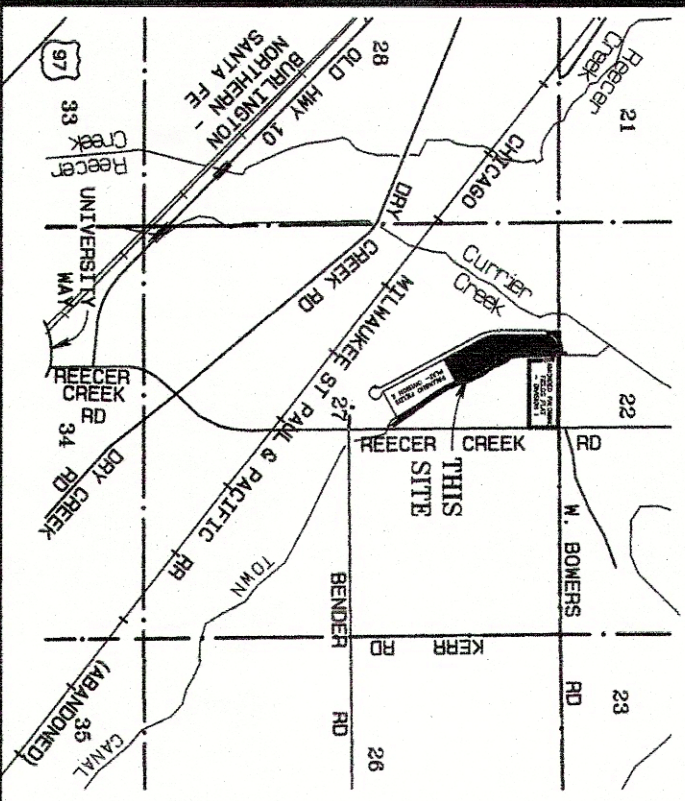
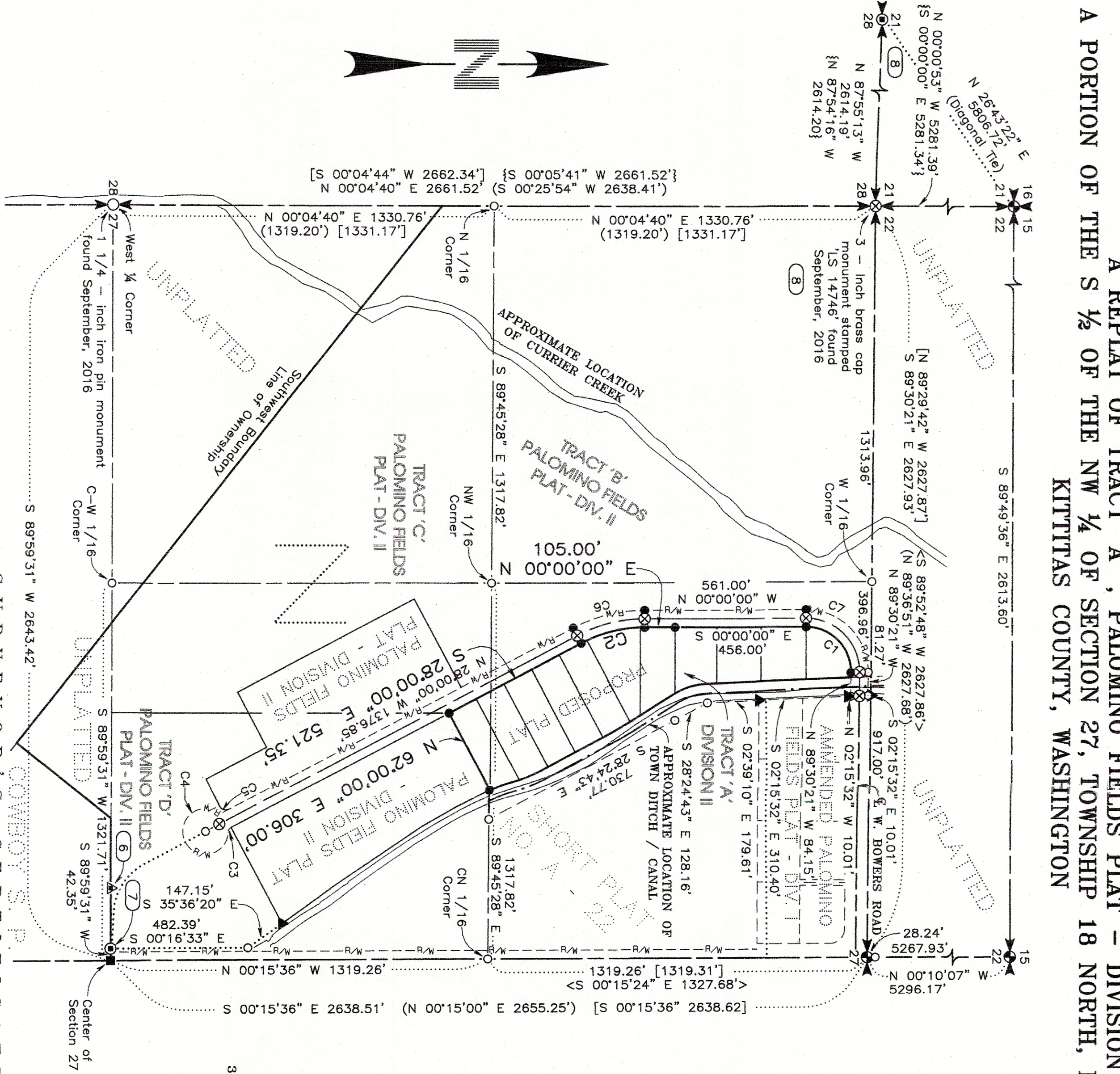


VICINITY MAP  
(Not To Scale)



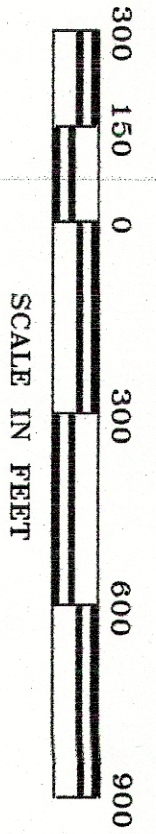
PALOMINO FIELDS PLAT - DIVISION III  
A REPLAT OF TRACT 'A', PALOMINO FIELDS PLAT - DIVISION II  
A PORTION OF THE S 1/2 OF THE NW 1/4 OF SECTION 27, TOWNSHIP 18 NORTH, RANGE 18 EAST, W.M.  
KITITAS COUNTY, WASHINGTON



**NOTICE**  
This is a Major Plat and as such is not intended to show, nor does it purport to show, all easements and encumbrances.

**BASIS OF BEARINGS**

The bearing for the East boundary line of the Northwest quarter of Section 27 equal Cruise & Nelson's bearing of South 00°15'36" East for the same line as shown on the F.H.A. U.S.D.A. property survey found under Kittitas County's Auditor File No. 199702200014



INSTRUMENT USED		INDEXING DATA	
Trimble R10 GPS Receivers		527 T18N R18E	
Traverse Closure Meets Standards Per WAC 332-130-090			

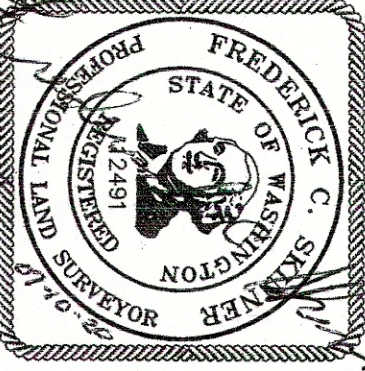
**WESTERN PACIFIC ENGINEERING & SURVEY**

A TERRA DEVELOPMENT SERVICES CORPORATION  
1328 E. Hunter Place, Moses Lake, Washington  
T:(509)765-1023 F:(509)765-1298  
Services in Washington and Idaho

**LCU, INC.**

Surveyed by LMH  
Drawn by Tm/FCS  
Checked by FCS  
Sod 1" = 300'  
Sheet 1 of 5  
Project No. 18146

**SURVEYOR'S CERTIFICATE**  
I hereby certify that the Palomino Fields Plat - Division III replat is based on an actual survey and subdivision of Section 27, Township 18 North, Range 18 East, W.M.; that the distances and courses and angles are shown thereon correctly; that the monuments have been set; and lot and block corners staked on the ground.



Frederick C. Skinner, P.E. / P.L.S.  
Western Pacific Engineering  
1328 Hunter Place  
Moses Lake, Washington 98837

**AUDITOR'S CERTIFICATE**  
Filed for record this ..... day of ..... 2020, at ..... M. in Book ..... of Surveys at Page(s) .....  
request of Western Pacific Engineering & Survey, Inc. at the  
County Auditor  
Deputy County Auditor

**APPROVALS**

**KITITAS COUNTY DEPARTMENT OF PUBLIC WORKS**  
I HEREBY CERTIFY that the Palomino Fields Plat - Division III, has been examined by me and I approve this plat.  
Dated this ..... Day of ..... A.D., 2020.  
Kittitas County Engineer

**HEALTH DEPARTMENT**  
I HEREBY CERTIFY that the Palomino Fields Plat - Division III, has been examined by me and I find that the sewage and water system herein shown does meet and comply with all requirements of the County Health Dept.  
Dated this ..... Day of ..... A.D., 2020.  
Kittitas County Health Officer

**CERTIFICATE OF PLANNING DEPT.**  
I HEREBY CERTIFY that the Palomino Fields Plat - Division III, has been examined by me and find that it conforms to the Comprehensive Plan of the Kittitas County Planning Commission.  
Dated this ..... Day of ..... A.D., 2020.  
Kittitas County Planning Official

**CERTIFICATE OF TREASURER**  
I HEREBY CERTIFY that the taxes and assessments are paid for the preceding years and for this year in which the plat is now to be filed. Parcel No. 980972.  
Dated this ..... Day of ..... A.D., 2020.  
Kittitas County Treasurer

**CERTIFICATE OF ASSESSOR**  
I HEREBY CERTIFY that the Palomino Fields Plat - Division III, has been examined by me and I find the property to be in an acceptable condition for platting.  
Parcel No. 980972.  
Dated this ..... Day of ..... A.D., 2020.  
Kittitas County Assessor

**KITITAS COUNTY BOARD OF COMMISSIONERS**  
EXAMINED AND APPROVED this ..... day of ..... A.D., 2020.  
BOARD OF COUNTY COMMISSIONERS  
By .....  
Chairperson  
ATTEST:  
Clerk of the Board